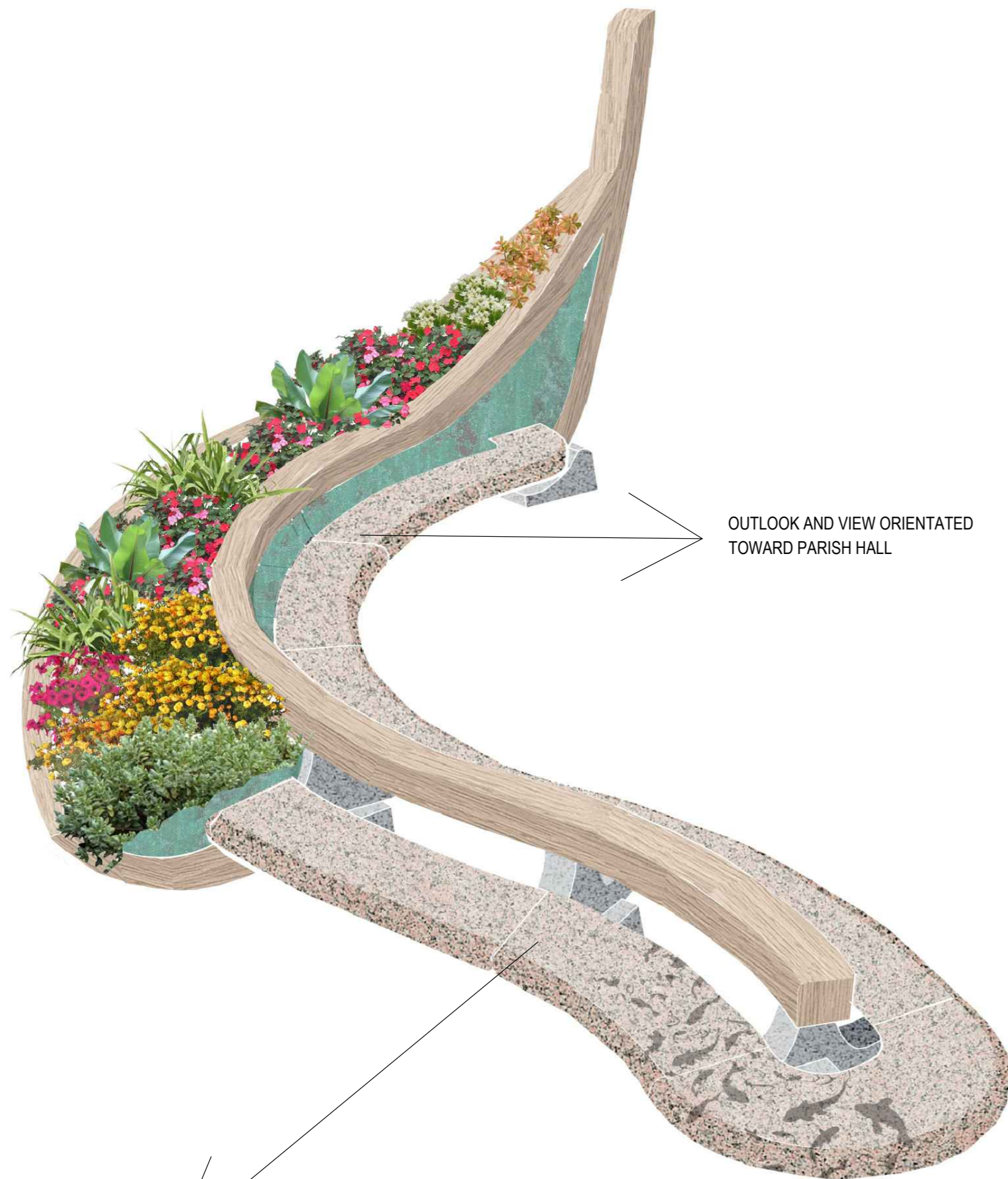


PRINCIPAL BENCH DESIGN



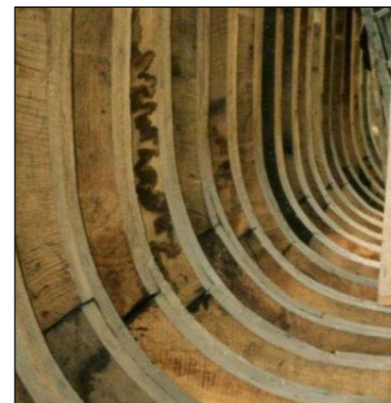
OUTLOOK AND VIEW ORIENTATED TOWARD PARISH HALL

OUTLOOK AND VIEW ORIENTATED TOWARD HARBOUR

MATERIAL PALETTE



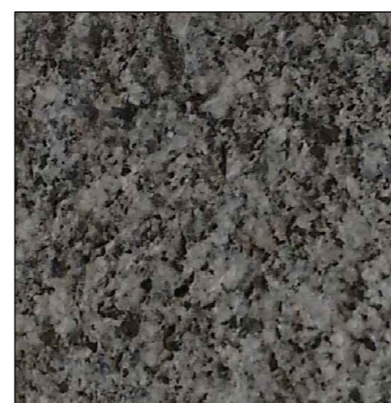
Seasoned oak



Preformed timbers



Jersey granite (bench seat)

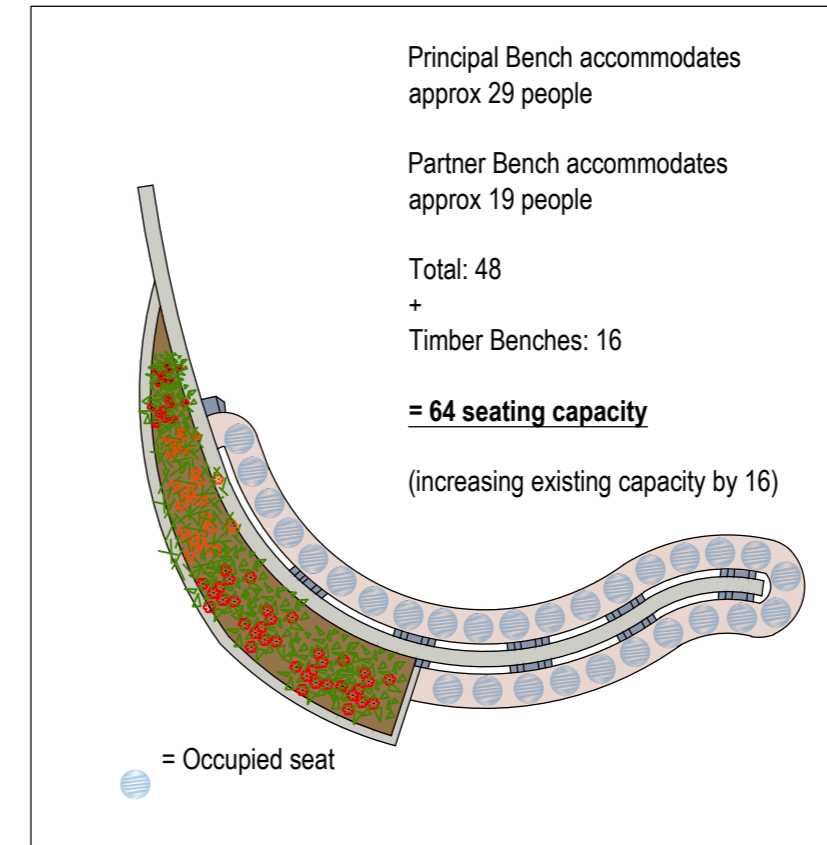


Blue/grey granite (bench feet)

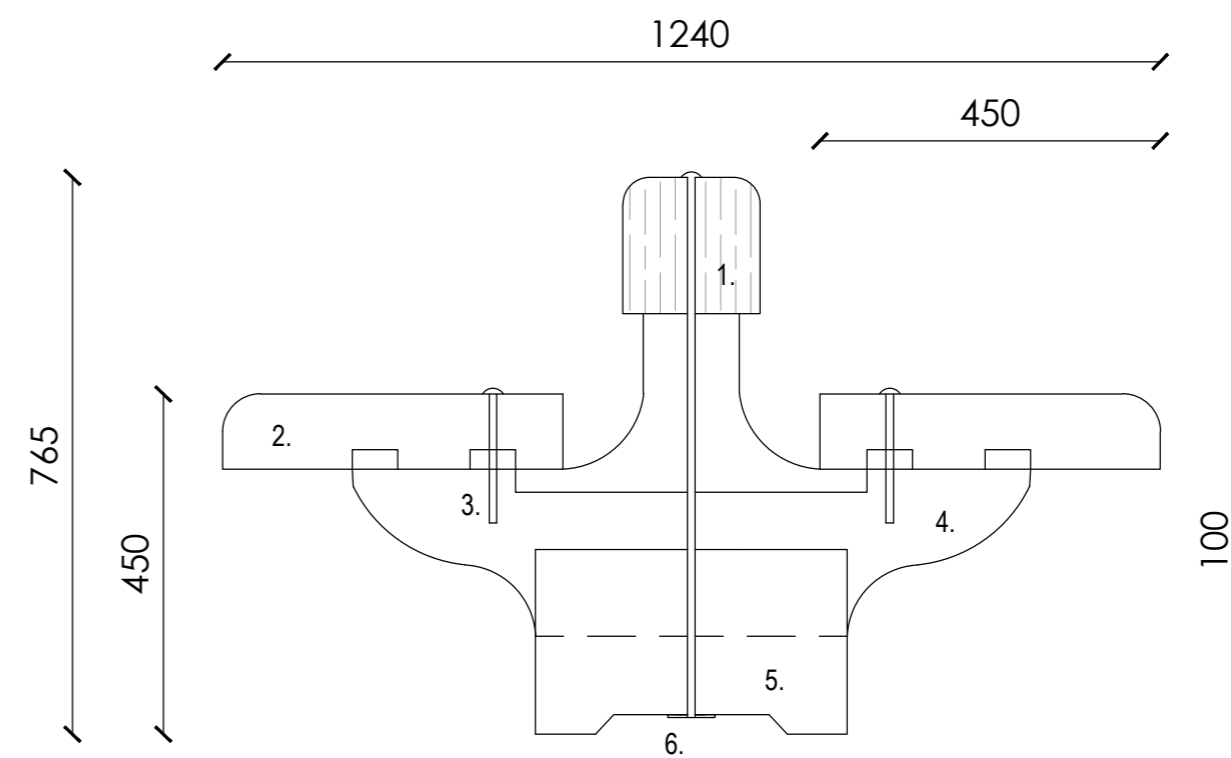


Engraved/etched stone

PLAN DRAWING 1:100 @ A2



CONSTRUCTION CONCEPT & CRITICAL DIMENSIONS 1:10 @ A2



1. Timber 200 x 200mm; Seasoned oak (backrest)
2. 100-120mm thick seat; granite 'Jersey pink'
3. Brass peg & bolt fixing
4. Stone dovetail support; granite blue/grey
5. Stone 'foot' support; granite blue/grey
6. Internal bolt; Brass fixings

NOTES

Figured dimensions only are to be taken from this drawing. All dimensions are to be checked on site before any work is put in hand. If in doubt, seek confirmation.

This drawing must be read in conjunction with all other architects detail drawings, schedules and specifications.

All drawings are to be read in conjunction with relevant drawings from other consultants. In the case of inconsistencies, seek confirmation.

This drawing must not be copied in whole or in part without the prior written permission of Axis Mason Ltd.

© Copyright Axis Mason Ltd

Rev	Description	Dwn	Ckd	Date
SK1	ISSUED FOR APPROVAL	LB	LB	26.08.16
SK2	ISSUED FOR APPROVAL	LB	LB	22.09.16
SK3	Parish Roads Committee Presentation	LB	LB	17.11.16
SK4	Public Exhibition	LB	LB	08.03.17

AXIS MASON Reeds Wharf, 33 Mill Street, London, SE1 2AX
020 7231 5558 WWW.AXISMASON.COM
LONDON GLASGOW JERSEY GDANSK DURBAN

Client: Parish of St. Brelade

Project: St. Aubin Village Improvements

Drawing Title: Presentation Drawing Sheet 3

Scale @ A2:	AS SHOWN	Date:	Aug 2016
Project Co-ordinator:	LMB	Issue Status:	PRELIMINARY

Job No:	Drawing No:	Revision:
2722	003	SK4